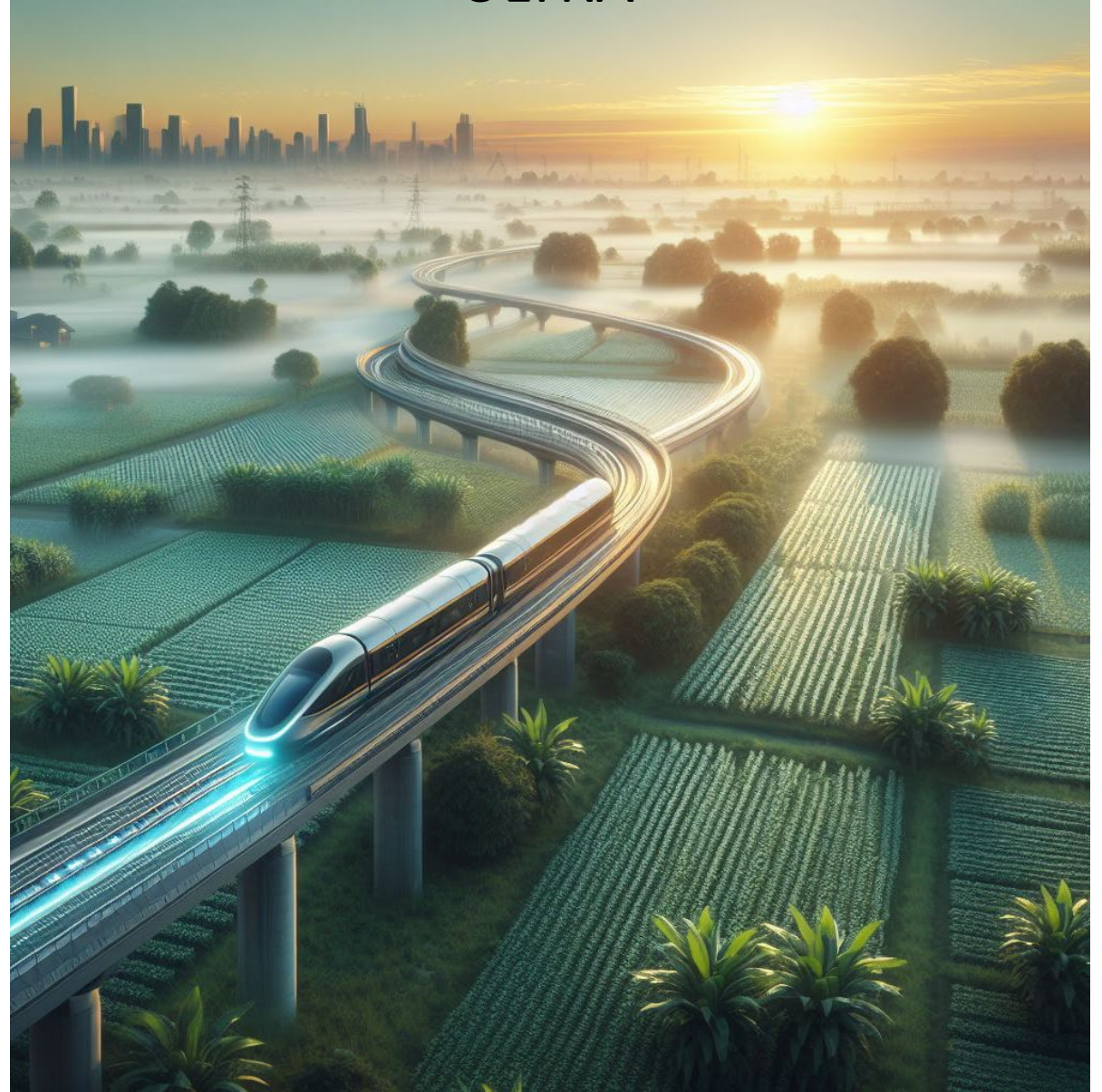


ORIGINAL



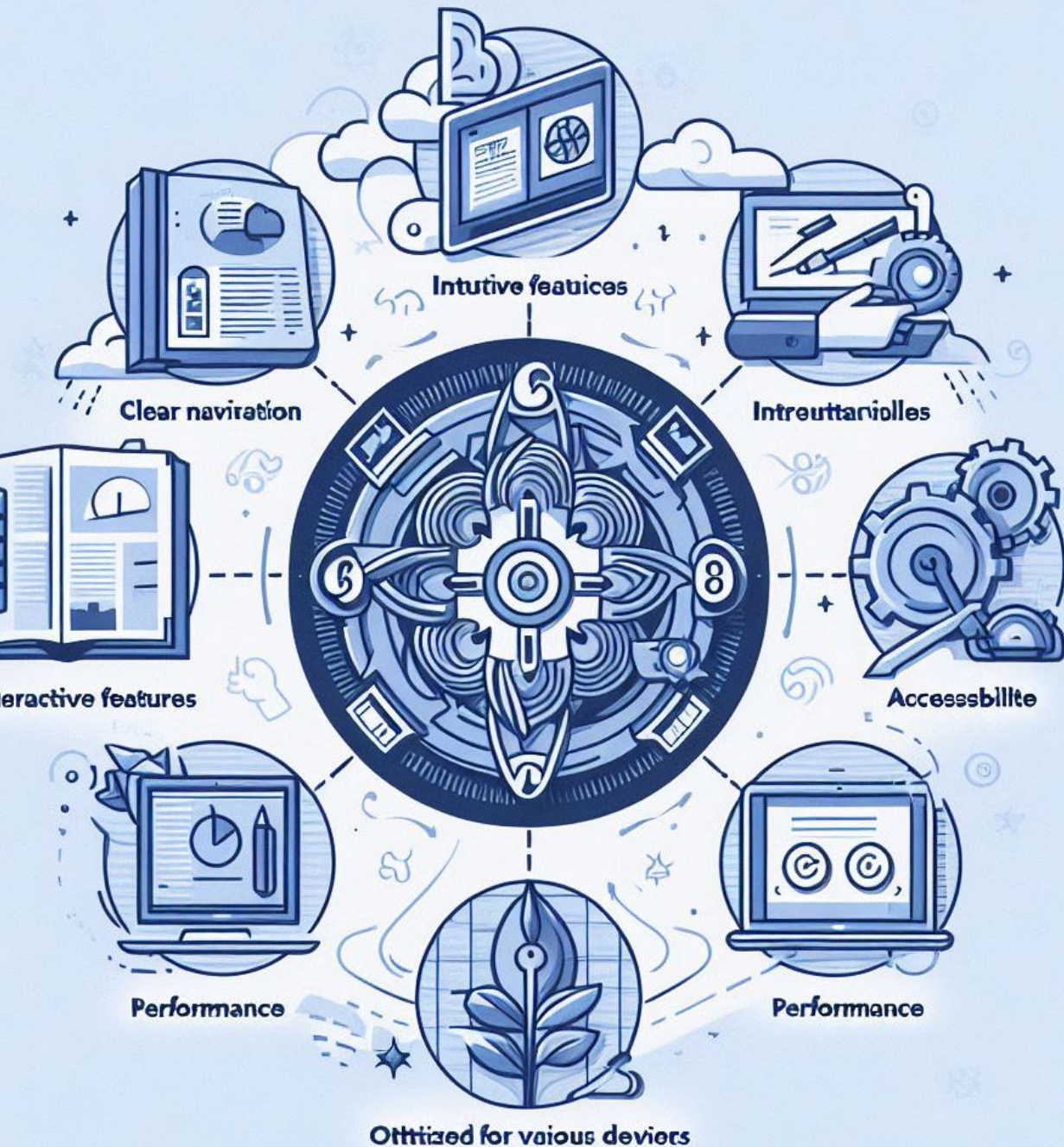
ULTRA





Introduction

- Welcome, faculty members! Today, we'll discuss the transition from the Original Course View to the new Ultra Course View in Blackboard.
- Our focus: **Why it's advantageous to build fresh courses in Ultra** rather than relying on conversions.



1. Understanding the Ultra Course View

- **Ultra Course View** was designed from the ground up to enhance teaching and learning experiences.
- Key features:
- **Clear Navigation:** Intuitive design for easy access to course materials.
- **Interactive Features:** Engaging tools for student interaction.
- **Accessibility:** Prioritizes accessibility for all learners.
- **Performance:** Optimized for various devices.

2. The Temptation of Conversion

- Yes, Blackboard offers the ability to convert original to ultra, but let's consider the downsides:
- **Errors:** Conversions often result in unexpected errors or loss of content due to differences between Original and Ultra.
- **Messy Translations:** Content conversions may require substantial reworking (Examples content display and navigational levels)
- **Settings and Configurations:** Changes to object settings/configurations can cause confusion as new settings are added or modified in Ultra and other settings have been deprecated. .





3. The Case for Fresh Builds

- **Time Efficiency:** Rebuilding is generally quicker than fixing conversion, formatting, and layout issues.
- **Clean Slate:** Fresh builds ensure no hidden issues from past courses.
- **Thoughtful Design:** Opportunity to rethink course design, assessment alignment, and improvements. Taking advantage of the streamlining and new functionalities of Ultra.

4. Strategies for Fresh Builds

- **Start in a Development Shell:**
- Build in a separate shell, experiment, and test without affecting the original master course.
- Maintain the development shell for future iterations or as a master version.





5. Course Templates

- Colleges may choose to adopt a **Course Content Template**:
- Provides a basic course structure.
- May Include essential information and resources.
- Jumpstart your fresh build process.



What About?

- Courses with just a few items/links?
- Courses with multiple layers of navigation? (Nested past four levels, content is migrated up to the lowest available level)
- Complex courses (A lot of Content/Complex Adaptive Release)

Conclusion

- In summary, fresh builds in Ultra offer:
- **Efficiency:** Less time spent fixing conversion errors.
- **Quality:** A well-structured course with fewer issues.
- **Opportunity:** Reflect on design and enhance student experiences.



Example

- Levels of Navigation
- Streamline content and Design





Questions?